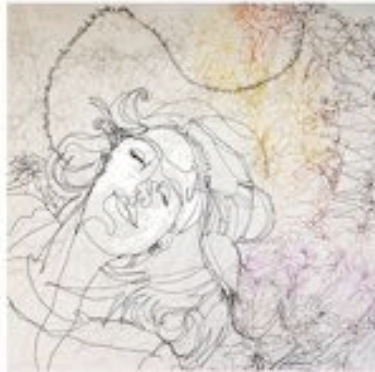


FRENCH ARTS FACTORY

EXHIBITION

PORTRAITS / FACES



Marie Baslé

Anna Golicz-Cottet

Dominique Allain

From March 17th to May 1st 2016
Opening thursday March 17th 2016 - 7 pm to 9pm

Contact : **Véronique MOULIN**
Phone. : 06 60 53 60 54 / 01 77 13 27 31
vemoulin@frenchartsfactory.paris

French Arts Factory
19, rue de Seine - 75006 Paris

Open Tuesday to Friday 11 am – 7:30 pm
Saturday and Sunday 2 pm - 7:30 pm

www.frenchartsfactory.paris

Foreword

The bias which presided over the creation of the gallery **French Arts Factory**-to know the association within the same exhibition of 3 artists of the material takes again all its dimension. It is indeed a question, for us, of staging with a lot of requirement a common set, source of emulation between the artists.

We chose as the first anniversary of the gallery, the theme of the portrait - universal theme in the history of the artistic creation. There is an inexhaustible source of inspiration. This is evidenced by from March 17th in the gallery French Arts Factory.

Marie Baslé chooses the way of the association of in fact incompatible, heterogeneous rooms, in the wild aspect: it is her red wire. The spontaneity which characterizes our artist "of the singular art" give birth to mosaics - portraits of an incredible wealth. You have not perceived all the details yet, then stand back, it is striking.

Meaning faces in the lines so fine, the fruit of a work requiring from sculpture in wire. **Anna Golicz-Cottet** works everything in lightness, making succeed alternately broken, parallel, diagonal lines to give birth to air portraits.

Do you want to discover the synthesis of " the modern man " and " the first man "? With **Dominique Allain**, the art lovers will not have to choose between the « Quai Branly » and the « palace of Tokyo »! His ceramic portraits so meaning affect us profoundly so much we perceive the beautiful soul of these characters.

Véronique and Gérard MOULIN, French Arts Factory



Marie Baslé

« Impacte »

40 x 72 cm

Mosaïque



Dominique Allain

« K 15 1202 »

Ceramic Raku



Anna Golicz-Cottet

« Naissance d'une vénus »

Wire Sculpture



Marie Baslé

Marie Baslé turns to the mosaic in 2009, after an eclectic route in the crossroads of the plastic arts, the circus and the theater. These alive and kicking disciplines feed her creations.

Young artist of the singular art, her various trainings led her to look for the imperfection as the expression of the being.

The numerous domains which she explored allowed her to develop a personal expression which allies former and modern, craft and industrial materials, by assembling by juxtaposition of the small fragments of ceramic of all kinds, as of collected and diverted whole objects.

The practice of the mosaic represents for her a way to come true and to communicate.

Since 2011, she presents her creations in various cultural places



Eunecte

40 x 72 cm

Mosaïc



Anna Golicz-Cottet

Born in 1963, Anna Golicz Cottet-educated in art and communication at the Académie de la Grande Chaumiere in Paris. Later, she decided to express her artistic sensitivity in creating volumes and calligraphy wire.

Visual artist, she draws and writes in space, her work-a volumetric poetry quotidien-includes use equally volume, drawing and words. This is Alexander Calder she has the choice of her privileged material, the wire. She plans initially mentally her sketches in 3D, before making the wire.

According to her imagination, Anna also uses composite materials in addition: paper, plastics recovery, mirror, painting ... drawn from the industrial production residues. Remodeled, recycled and connected by calligraphy and architectures wire, they are an inexhaustible resource for the artist.

Transparency, lightness and absolute freedom ... in short, the happiness ... in a coil.



« Hélène » (détail)

100 x 10 x 160 cm

Wire Sculpture



Dominique Allain

Born in 1952, Dominique Allain lives and works on French Riviera.

Trained from the age of 10 years in the ceramic, he dedicates himself to it completely since the 2000s, becoming a specialist of the Raku, the technique of Japanese ceramic.

The fast cooking of the raku allows a profusion of effects of fumigation, craquelure and a metallic patina, presents on the "skin" of his sculptures colors and very varied materials.

The ceramist is fascinated by the theme of the body, his pathologies and his mutilations, concerning a permanent look the death, following a sick childhood which forced him to many hospitable stays.

His sculptures represent imaginary characters: fishes-men, catfishes, men with three eyes, with the bulging eyes and with the asymmetric looks, in alternation in alternation of curved or geometrical forms.

His work is presented in France in numerous galleries and several museums of the ceramic.



« Maria Cipollena »

Ceramic Raku Sculpture